



*Erfindergeist
Jülich*

Kreativ-Tag

KI - Fokus Bildgenerator

SD Prompt Engineering Teil 1

12.10.2024

Prompt Guide

<https://stable-diffusion-art.com/prompt-guide/>

Automatic1111 Web Ui

Stable Diffusion checkpoint
juggernautXL_juggXIByRundiffusion.safet

txt2img img2img Extras PNG Info Checkpoint Merger Train Settings Extensions

Prompt
(Press Ctrl+Enter to generate, Alt+Enter to skip, Esc to interrupt)

Negative prompt
(Press Ctrl+Enter to generate, Alt+Enter to skip, Esc to interrupt)

Generation Textual Inversion Hypernetworks Checkpoints Lora

Sampling method: DPM++ 2M Schedule type: Automatic Sampling steps: 20

Hires. fix Refiner

Width: 512 Batch count: 1

Height: 512 Batch size: 1

CFG Scale: 7

Seed: -1 Extra

Script: None



Phyrexian Horror Token - Evolution

Ziel: Erstellung eines Phyrexian Horror Tokens für das Spiel Magic the Gathering



Erster Versuch – Fehler analyse

- In SD1.5 Auflösung von 1024x1024 verwendet anstelle von 512x512
- CFG Vorgaben des Models beachten
- Doch mal einen Guide suchen:
<https://stable-diffusion-art.com/prompt-guide/>

Zweiter versuch

Positive Prompt:

Create a hyper-realistic full-body shot of a horror creature with a body out of a mixture of flesh, metal and bones, thy body is covered with tentacles, mechanical and biological implants. the creature skin and eyes are highly detailed, Use hyper-realistic lighting and shadows to create a lifelike image that looks like it was taken with a 4k camera, ultra-detailed, with 8k resolution and sharp focus.



Zweiter Versuch - Fehler Analyse

- Ganze Sätze sind nicht wichtig
- Man kann Webseiten angeben
- Man kann Künstler angeben

Webseiten:

<https://www.artstation.com/>

<https://www.deviantart.com/>

Künstler finden

Hashtags:

#digitalartist

#digitalart

#illustration

Dritter versuch

Positive Prompt:

evil horror creature with a bone head, tentacle ornaments, in the background a pink and blue colored sky with clouds and stars, epic, fantasy, by Axel Sauerwald, standing, detailed clothing, digital painting, hyperrealistic, [deviantart](#), [artstation](#), highly detailed,



Reverse Engineering in ChatGPT

beschreiben einen phyrexian horror auf englisch

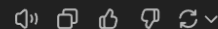


A Phyrexian horror is a nightmarish creature hailing from the dark and twisted world of Phyrexia in the Magic: The Gathering universe. These abominations are the result of Phyrexia's corrupting influence, where organic and mechanical elements merge into grotesque amalgamations. Phyrexian horrors often embody the concept of "completion," where living beings are transformed into nightmarish servitors of Phyrexia.

A typical Phyrexian horror might have a distorted, metallic body with sharp, angular edges, infused with tubes, wires, and machinery. Its once-recognizable features are twisted into monstrous forms, with flesh and metal melding in unnatural harmony. These horrors often exude an aura of decay, corruption, and malevolence.

Their designs vary widely, from hulking monstrosities with multiple arms and serrated limbs to more subtle and insidious forms that manipulate and infiltrate. They are often depicted as instruments of Phyrexian dominance, embodying both the technological mastery and the horrifying infection that defines Phyrexian ideology.

In battle, Phyrexian horrors can demonstrate a horrifying array of abilities, combining their mechanical enhancements with dark magic to devastate opponents. Their appearance and abilities evoke a sense of terror and revulsion, capturing the essence of the Phyrexian menace in the Magic: The Gathering multiverse.



Nr4. ChatGPT

Positive Prompt:

(masterpiece, best quality), nightmarish creature, organic and mechanical elements merge into grotesque amalgamations, distorted, metallic body with sharp, angular edges, infused with tubes, wires, and machinery with flesh and metal melding in unnatural harmony, pointing at viewer, in a magical forest, (hyper realism, soft light, dramatic light, sharp, HDR)

Negative prompt:

(worst quality, low quality)



Models

SD1.5

512x512

Model abhängig: 712x512

<https://civitai.com/models/4384/dreamshaper>

Viel negative prompts helfen

GPU 6 GB RAM

SDXL

1024x1024

Model abhängig: 1248/762

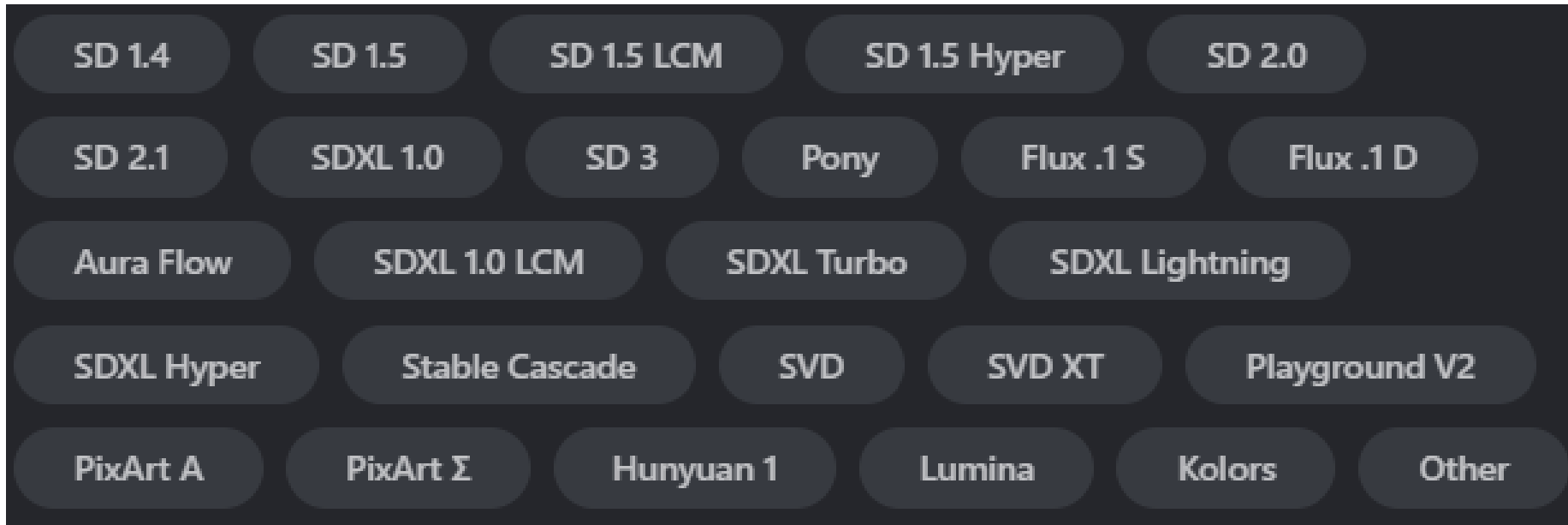
<https://civitai.com/models/133005/juggernaut-xl>

<https://civitai.com/models/119229/zavychromaxl>

Eher weniger negativ, testen und
nur bei Bedarf nutzen

GPU 12-24 GB RAM

Weitere Modelle



Erste Schritte SDXL

Positive Prompt:

masterpiece, best quality, potrait, aggressive, gigantic ancient overgrown mega horror creatures out of metal infused with tubes wires and surrounded by vibrant life and organic magic with flesh and metal melding in unnatural harmony in a lush fantasy mountain valley, in the style of hybrid creature organic and mechanical elements merge into grotesque amalgamations

Negative prompt:

text, watermark, malformed, deformed, bad anatomy, (worst quality, low quality:1.4), flesh





SDXL FINAL

Positive Prompt:

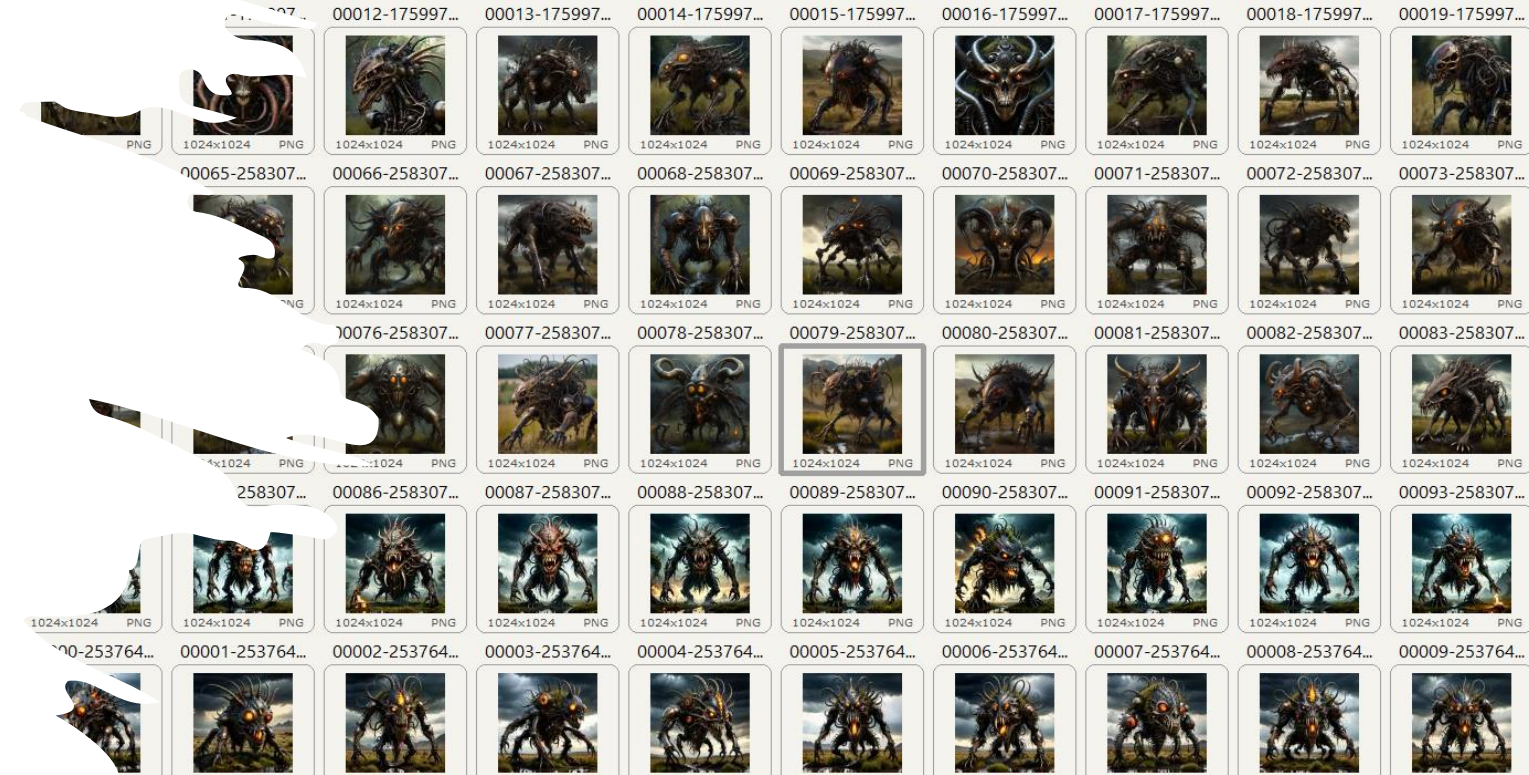
masterpiece, best quality, aggressive, gigantic ancient mega horror creatures out of metal infused with tubes wires and surrounded by vibrant life and black oil magic with flesh and metal melding in unnatural harmony on a lush fantasy plain with rotten grass, trees and hills some black oil puddles on the ground, in the style of hybrid creature organic and mechanical elements merge into grotesque amalgamations, real photo, hyperreal, (sharp focus, hyper detailed, highly intricate)

Negative prompt:

(worst quality, low quality), ugly, blurry, window, anime, cgi, 3d render, low resolution, monochrome,

Massen Produktion

- Rechtsklick auf Generate
- Generate forever



Generate

Generate forever

Cancel generate

forever

